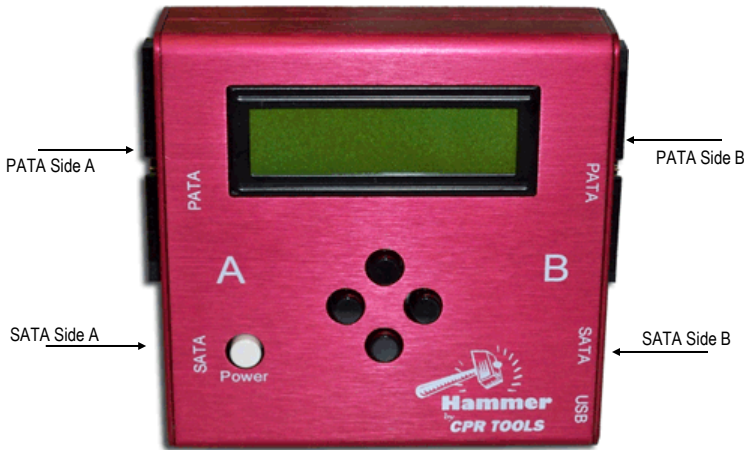


## Secure Erase Data on up to 4 Hard Drives at Once!



### Security Erase

Security Erase is now a standard technology embedded in most ATA hard drives manufactured after 2001. This technique is considered equal to degaussing by NIST and because the drives can be re-used has the added benefit of being green!

### NIST Sanitization Recommendations

The National Institute of Standards and Technology has established new standards for electronic media sanitization which ranks Security Erase at the highest security level without rendering the media unusable. With Hammer™, you can safely destroy data and re-deploy costly hardware. For more information on NIST Special Publication 800-00, visit <http://www.nist.gov>.

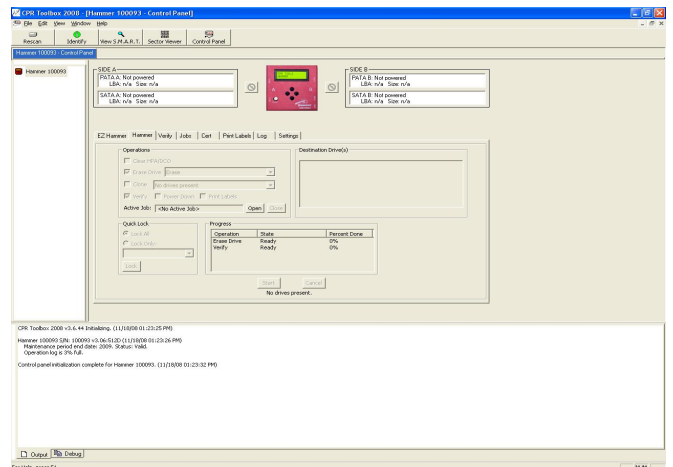
### The Hammer™ Advantage

When this command is implemented by Hammer™, the hard drive is assigned a random password that locks the drive completely. It will not unlock until the Security Erase procedure is completed. On drives where Security Erase is not present, Hammer™ destroys data using an embedded version of CPR Tools' BangDisk™ utility.

- Securely erases all data on up to four PATA/SATA hard drives simultaneously
- Meets NIST 800-88 'purge' and 'clear' specs
- Drives can easily be re-deployed after erasing
- Provides audit trails in the form of labels, certificates of compliance or text record of eradication logs
- G-RASE™ erase sectors on G-List
- Multi session log stored on Hammer
- Multi-Language support
  - English
  - Spanish
  - French
- Email Alert (allows the user to input an email address to be notified when process starts, stops or time increments)
- Portable hand held device for field use
- Lock drives with password for erasure at later time

CPR Tools' Hammer™ implements the ATA Security Erase command to completely purge all data from ATA hard drives. This easy-to-use, one-step device connects up to four (4) hard drives via standard cables (included) and erases data simultaneously at up to 4.0GB/minute. For onsite data purging, the compact, portable Hammer™ operates as a stand alone device and will store up to 256 sessions before being transferred to a computer.

### Free Host Companion Software CPR Toolbox™



Hammer™ may also be used with the host companion software, CPR Toolbox™ (included) for additional functionality.

SPECIFICATIONS	
Drive Interfaces	Parallel ATA (2) & Serial ATA (2)
Host Interface	USB 2.0
Max Transfer Rate	4.0 GB/minute
Input Voltage	+12V DC
Max Input current	3.5A
Voltage to Drives	12V DC, 5+V DC
Device Addressing Support	28 & 48 bit
Max Transfer Mode	UDMA mode 4
Supported Devices	ATA 4 through ATA 7
Device Dimensions	4.15in L x 1.41 in H x 4.16 W
Approximate Weight	11 oz.

