

# SCSI Hammer™

## Secure Erase Data on up to 30 Hard Drives at Once!



- Securely erases all data on up to 30 SCSI hard drives simultaneously
- Meets NIST 800-88 'purge' and 'clear' specs
- Connects directly to servers and mass storage units so there is no need to remove drives before erasing
- Drives can easily be re-deployed after erasing
- Provides audit trails in the form of labels, certificates of compliance or text record of eradication logs
- Multi session log stored on SCSI Hammer
- Email Alert (allows the user to input an email address to be notified when process starts, stops or time increments)
- Portable, stand-alone device includes host companion software, CPR Toolbox™ which extends device functionality

### NIST Sanitization Recommendations

The National Institute of Standards and Technology has established new standards for electronic media sanitization which ranks firmware based erasure at the highest security level without rendering the media unusable. With SCSI Hammer™, you can safely destroy data and re-deploy costly hardware. For more information on NIST Special Publication 800-00, visit <http://www.nist.gov>.

### The Hammer™ Advantage

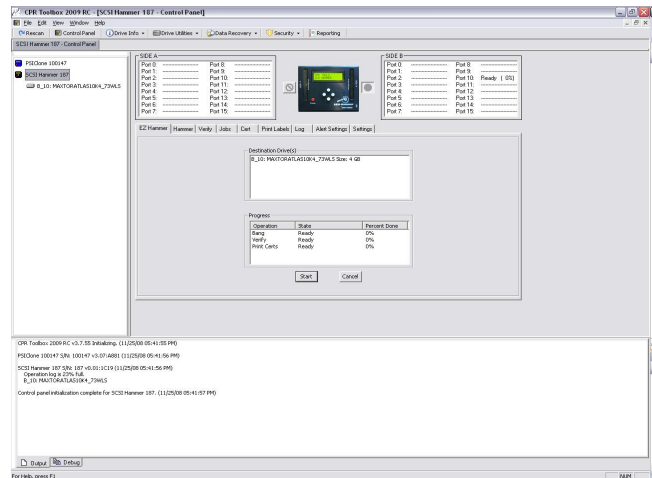
When the CPR Tools Secure Erase command is implemented by SCSI Hammer™, the hard drive is unusable until the command completes. On drives where CPR Tools Secure Erase is not supported, SCSI Hammer™ destroys data using an embedded version of CPR Tools' BangDisk™ utility.

By securely erasing data without damaging the hard drive, SCSI Hammer™ is a cost effective and environmentally friendly alternative for end of life hard drive data security. Published reports show that for every ten hard drives that enter the market seven are discarded. Make sure your data is safely destroyed without sacrificing security or harming the environment.

CPR Tools' Hammer™ implements a firmware erasure command to completely purge all data from SCSI hard drives. This easy-to-use, one-step device connects four (4) hard drives via standard cables (included) and erases data simultaneously or can connect to a server or Mass Storage Array and erase up to 30 drives at one time. For onsite data purging, the compact, portable SCSI Hammer™ operates as a stand alone device and will store up to 256 sessions before being transferred to a computer.

### Free Host Companion Software CPR Toolbox™

Hammer™ may also be used with the host companion software, CPR Toolbox™ (included) for additional functionality.



SPECIFICATIONS	
Drive Interfaces	SCSI 50 pin (2) & 68 pin (2)
Host Interface	USB 2.0
Input Voltage	+12V DC
Max Input current	3.5A
Voltage to Drives	12V DC, 5+V DC
Max Drives	30
Supported Devices	SCSI
Device Dimensions	5.18in L x 1.41 in H x 4.13 W
Approximate Weight	11 oz.

View the SCSI Hammer in action here:  
<http://www.youtube.com/watch?v=ad2tpsj2YD>



2022 Hendry St • Ft. Myers, FL 33901  
Tel: 239-464-3282 • Fax: 863-674-0066  
[www.cprtools.com](http://www.cprtools.com) • [info@cprtools.com](mailto:info@cprtools.com)